



ROBINSON
MARSH



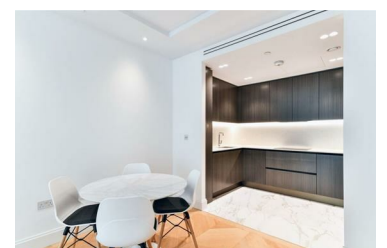
31 John Islip Street, London, SW1P 4FE

£6,199 Per Month



Introducing this stylish two bedroom, two bathroom apartment located on the third floor of a sophisticated residential development in central Westminster. The apartment has been finished to an exceptionally high standard and features herringbone solid wooden flooring throughout. This property comprises a spacious open-plan living room and kitchen, a large private terrace, two double bedrooms both with excellent storage, and two luxury bathrooms (one en-suite).

This apartment offers the epitome of luxury living, with a 24-hour concierge service ensuring security and convenience at all times. Residents can enjoy access to the stunning swimming pool, gym, sauna and spa facilities. There are numerous underground stations (Westminster, Pimlico & Westminster) and regular bus routes all within walking distance, as well as an array of excellent restaurants, shops, cafes and iconic attractions such as The Tate Gallery and Houses of Parliament.



SQB 77 Marsh Wall, Canary Wharf, London, E14 9SH

Tel: 02078681444 Email: info@robinsonmarsh.com www.altosoftware.co.uk